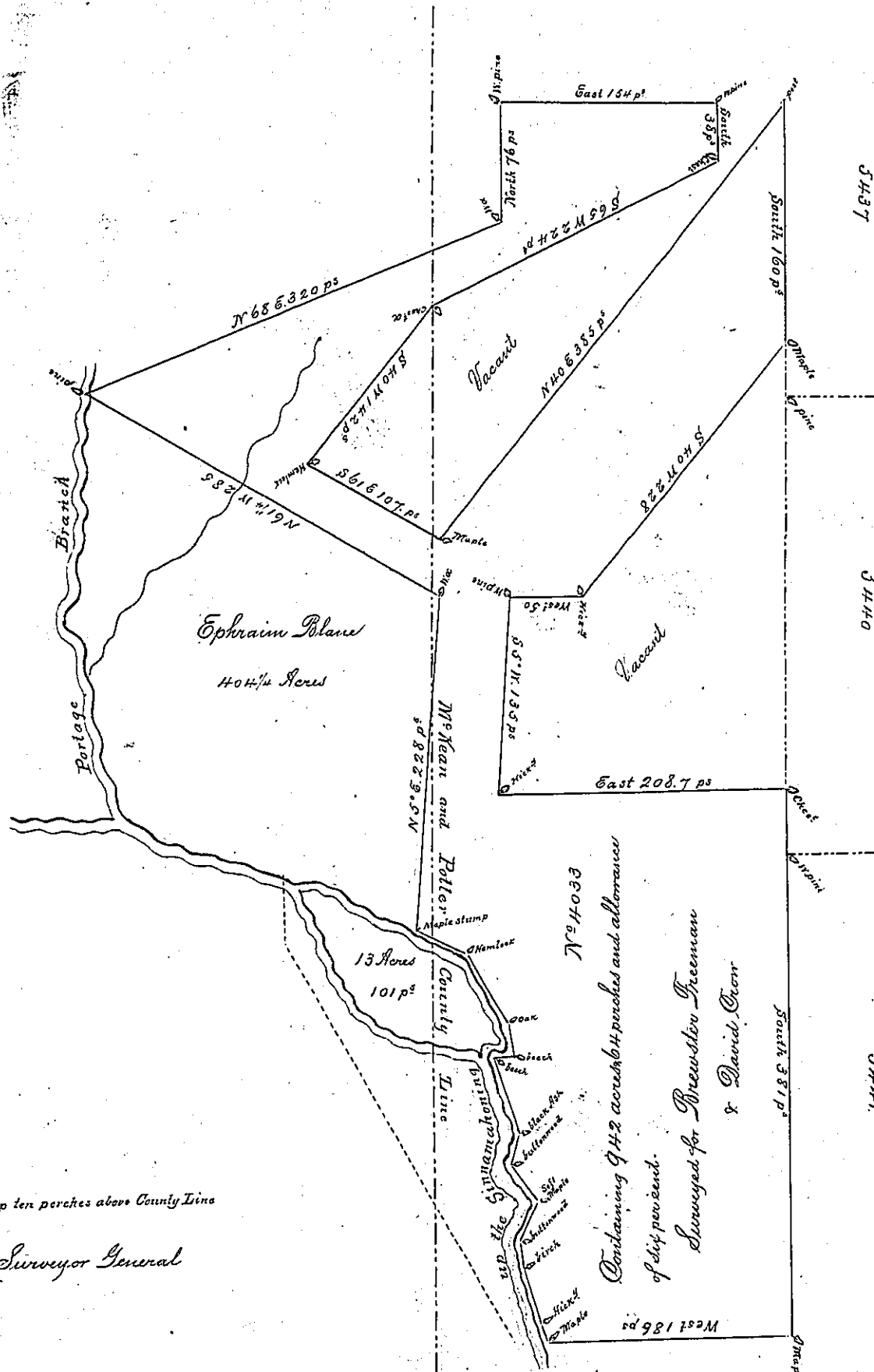


(see C-99-172)



Courses and distances up the Sinnamahoning from Maple to Maple Stump

- N 21 W 9 ps Hick<sup>d</sup>
- N 13 W 40 . Birch
- N 1 E 20 . Billenwood
- N 24 E 32 . Soft Mash
- N 32 W 30 . Billenwood
- N 18 E 22 . Oak
- N 13 W 57 . beech
- N 87 E 12 . beech
- North 22 . Oak
- N 27 W 56 . Heml<sup>d</sup>
- N 59 W 40 . Maple stump ten perches above County Line

To the Surveyor General

A copy of Survey on file in office John King D.S.

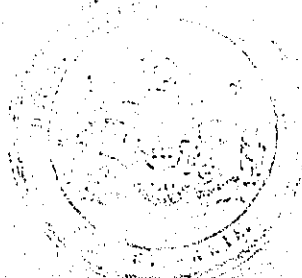
This Survey was executed by me on the 3<sup>rd</sup> of June 1822 in pursuance of Warrant N<sup>o</sup> 14033 in the name of John Nicholson dated August 30<sup>th</sup> 1793 and included the Sinnamahoning Creek and an Island also some land on the West side of the Creek containing together 1031 Acres & allowance -

By a decision of the Board of Property dated Feb<sup>y</sup> 6<sup>th</sup> 1826 it was determined that the Island could not be included in the Warrant and I was directed by Gabriel Weister Esquire Surveyor General to make another survey and to leave out the Island & Creek which I did accordingly and made return according to law - Having understood however that the return had not reached the office I did at the request of David Crow Esq<sup>r</sup> send a copy of the survey as on file in my office

Approved May 17-1837 by Miriam Payne Deputy Surveyor of McKean County

April 5<sup>th</sup> 1828 John King D.S. written to by order of the Board of Property directing him to make a return of the whole tract, excluding the Sinnamahoning, the Island and all the land West of the Sinnamahoning. That is to run from the Maple West to the Sinnamahoning then up the Bank of the same to the Maple Stump - and informed him of Freeman and Crow wish to have the land west of the Sinnamahoning they must take out a New Warrant - and that by complying with the requests of the law they might also obtain a title on the Island

IN TESTIMONY that the above is a copy of the original remaining on file in the Department of Internal Affairs of Pennsylvania, made conformably to an Act of Assembly approved the 16th day of February, 1833, I have hereunto set my Hand and caused the Seal of said Department to be affixed at Harrisburg, this third day of August 1897.



*James Whitte*  
Secretary of Internal Affairs.